



How to Replace a White or Black Electrical Outlet

000225 Black Outlet
000230 White Outlet

For Models A-46, A-42, & E-342

Tools Needed

- Flathead Screwdriver or 1/4" Nut Driver
- Philips Screwdriver



Questions?
Give us a call at 1-800-536-9495
or email support@ironaway.com

!

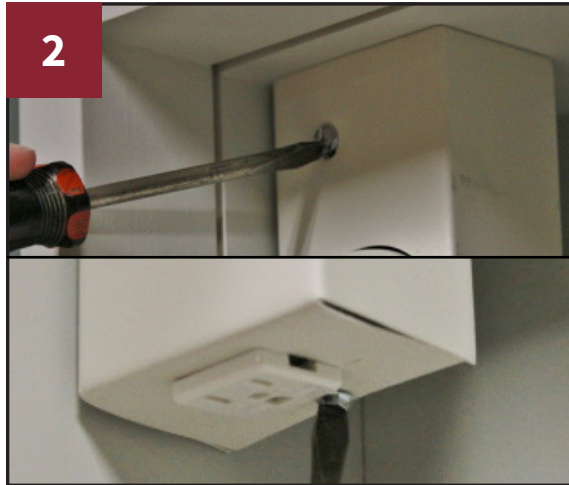
Please Note:

While photos show a white outlet installed at the bottom of the raceway, these instructions can be used for a white or black outlet on all A-46, A-42, and E-342 ironing centers, and are applicable for all outlet locations including side, front, and back of raceway.

Please follow guided steps for your specific model, as noted in this manual.

Please follow guided steps for your specific model, noted on this manual as the following: A = A-46, A-42, & E-342 with spotlight. B = E-342 without spotlight.

2



Unscrew electrical raceway

With electricity shut off at service entrance, begin removing electrical raceway from unit. Remove screws at the top and bottom of raceway with a flathead screwdriver. Gently pull raceway out of unit, being careful of wires that are still connected.

1



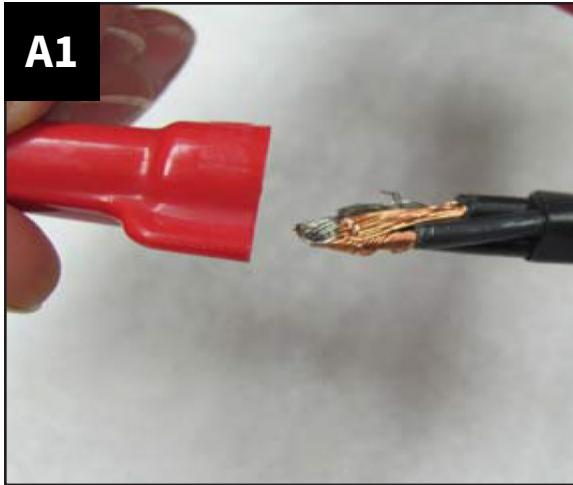
Turn off power at electrical entrance

Please disconnect all power to the unit at service entrance BEFORE attempting to service or rewire the unit.

3

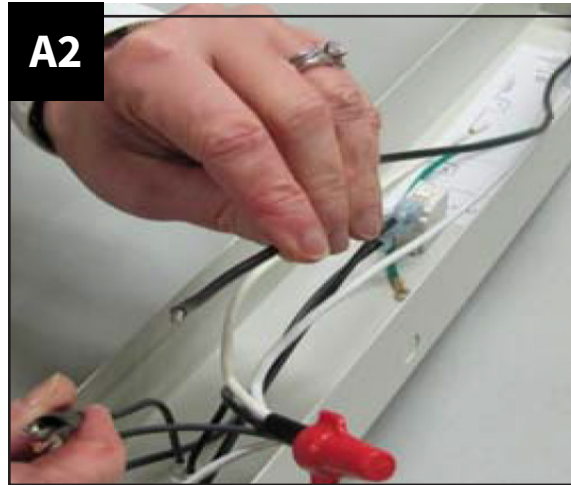
Disconnecting wires

To disconnect wires, please follow the instructions specific to your model, noted as following:
A = A-46, A-42, & E-342 with spotlight.
B = E-342 without spotlight.



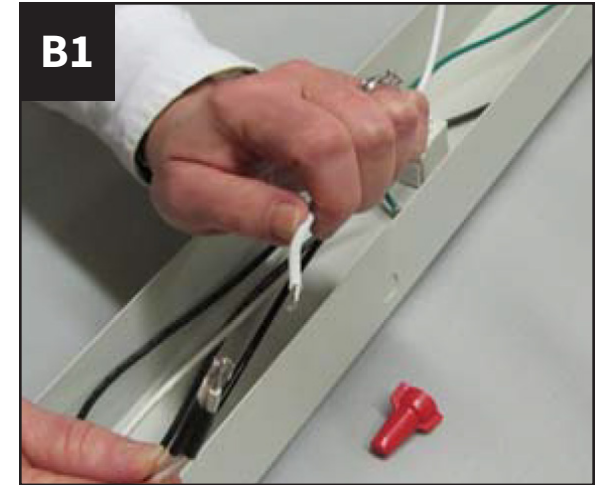
A-46, A-42, E-342 with spotlight

Locate the two bundles of wires (black, white) held together by wire nuts. Then, unscrew the wire nuts from the bundles in a counter-clockwise direction. Remove the long black wire from the black bundle that connects to outlet.



A-46, A-42, E-342 with spotlight

Next, remove the long white wire from white bundle that connects to outlet.



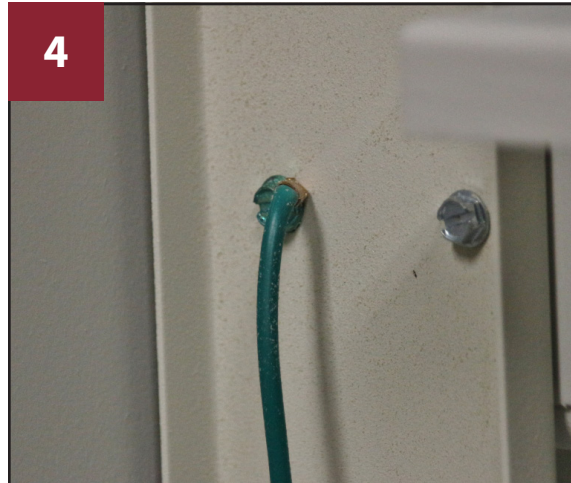
E-342 w/o spotlight

Locate the bundle of white wires held together by a wire nut. Unscrew wire nut in a counter-clockwise direction. Then, remove the long white wire that connects to the outlet from the bundle.



E-342 w/o spotlight

Remove the long black wire from the rocker switch by pulling on the blue terminal.



ALL: Disconnect green ground wire

Unscrew the green screw on unit to release green ground wire from outlet.



Pry off outlet clips

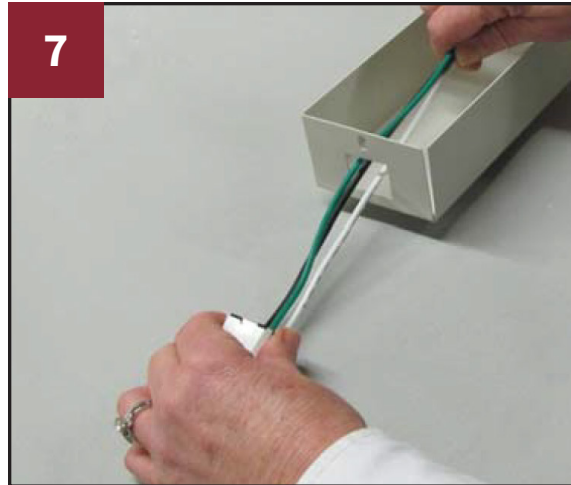
The outlet is held in place by springs on each side. With your flathead screwdriver, pry away each black spring from the outlet. The springs should break off from the outlet. If they do not, use needle-nose pliers to remove the springs from each side.



6

Remove outlet

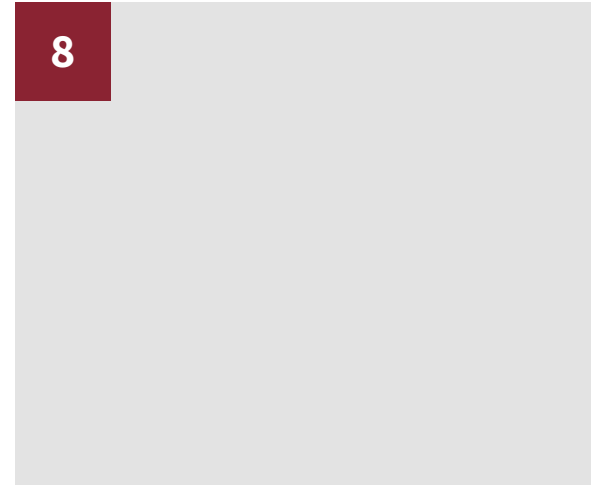
Remove old outlet by pulling out and sliding wires through hole.



7

Install new outlet

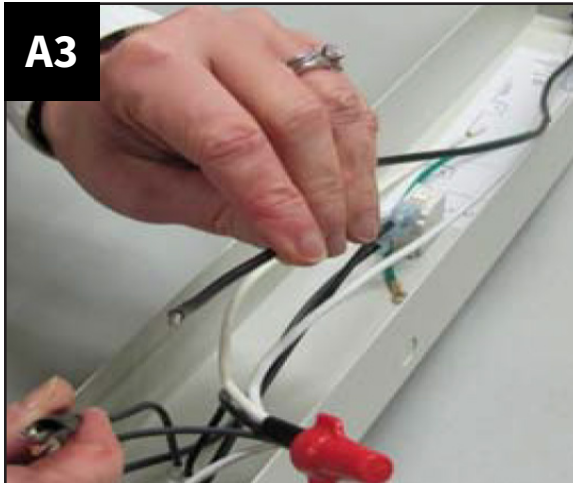
Slide wires from new outlet through hole in raceway, pushing bottom of outlet until it snaps into place.



8

Reconnecting wires

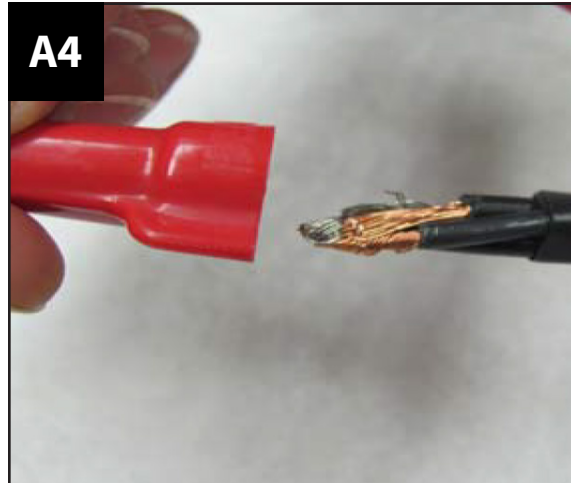
To reconnect wires, please follow the instructions specific to your model, noted as following:
A = A-46, A-42, & E-342 with spotlight.
B = E-342 without spotlight.



A3

A-46, A-42, E-342 with spotlight

Place the long white wire from the outlet into the white bundle of wires and replace the wire nut removed in step three.



A4

A-46, A-42, E-342 with spotlight

Place the long black wire from the outlet into the black wire bundle and replace the wire nut removed in step three.



B3

E-342 w/o spotlight

Connect the long black wire from the outlet by placing the blue terminal on the opening position on the rocker switch.



E-342 w/o spotlight

Connect the long white wire to the wire bundle and reattach the wire nut that was removed in step three.



ALL: Re-install raceway

Return raceway to unit, screwing top and bottom screws to hold in place. Restore power to ironing center.

Installation Complete!

